

“A BODMAS Sandwich”

£4.00p

Served before 10:30 am

## DAILY SPECIAL

Hot (Chicken, Beef, Pork) Sandwich

With chips and gravy

£5.50

Soup of The Day

Brackets

Orders

Division

Multiplication

Addition

Subtraction

Brackets

Orders

Division

Multiplication

Addition

Subtraction

Brackets

Orders

Division

Multiplication

Addition

Subtraction

# Adding foods together is easy!

## Cheddar Cheese

A mild slice of cheddar cheese, smoother than Drake. Add it to everything for that melty, gooey goodness.

£0.80

 Vegetarian



Add N'duja ketchup

Add a Filling for 1.8



Create Your Own

Go Freestyle! Simply Choose Your Sauce And Add Any Toppings

Brackets

Orders

Division

Multiplication

Addition

Subtraction



Brackets

Orders

Division

Multiplication

Addition

Subtraction

It's all in the pronunciation!

gravy  
chips



Brackets

Orders

Division

Multiplication

Addition

Subtraction

How can I combine two foods in a way  
that's hard to undo?

...soup?



Brackets

Orders

Division

Multiplication

Addition

Subtraction

Maybe I can't square-root a sandwich

But I can cube one!



Brackets

Orders

Division

Multiplication

Addition

Subtraction

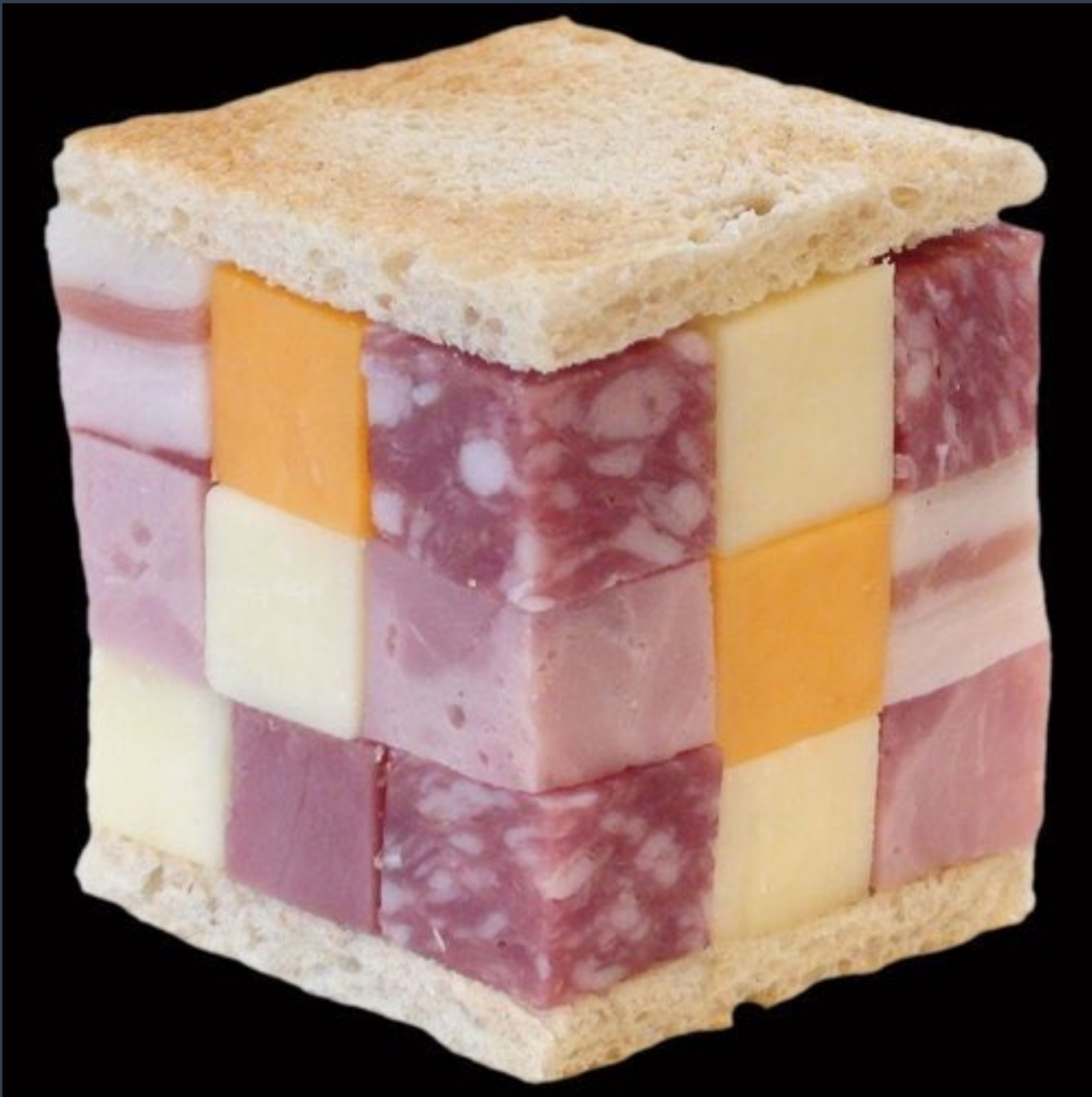
How would a sandwich work?

$$\frac{\text{bread}}{\left(\frac{\text{filling}}{\text{bread}}\right)} = \frac{\text{bread}^2}{\text{filling}}$$

You can't subtract tomatoes 😞

(cheese + tomato) sandwich – tomato

= (cheese + tomato) sandwich



$(\text{ham}^3 + \text{cheese}^3)$   
sandwich

(NOT a  
 $(\text{ham} + \text{cheese})^3$   
sandwich!)